

MATARIKI

HARBOUR CHALLENGE

Hikoikoi Waka Ama Club | Te Whanganui a Tara

Saturday 23 June 2018



Hikoikoi
WAKA AMA



Absolutely Positively
Wellington City Council
Me Heke Ki Pōneke

VENUE & DATE:

Te Wharewaka o Pōneke, Wellington Waterfront
Saturday 23 June – postponement date Sunday 24 June 2018

The 2018 Matariki Harbour Challenge will be held at Te Wharewaka o Pōneke, Wellington Harbour however if conditions determine the race venue may need to be changed due to unfavourable wind conditions then an alternative course has been arranged in Petone.

Paddlers will be advised of any venue change at least 24 hours prior to race to allow for alternative arrangements for those organising canoe trailers and waka.

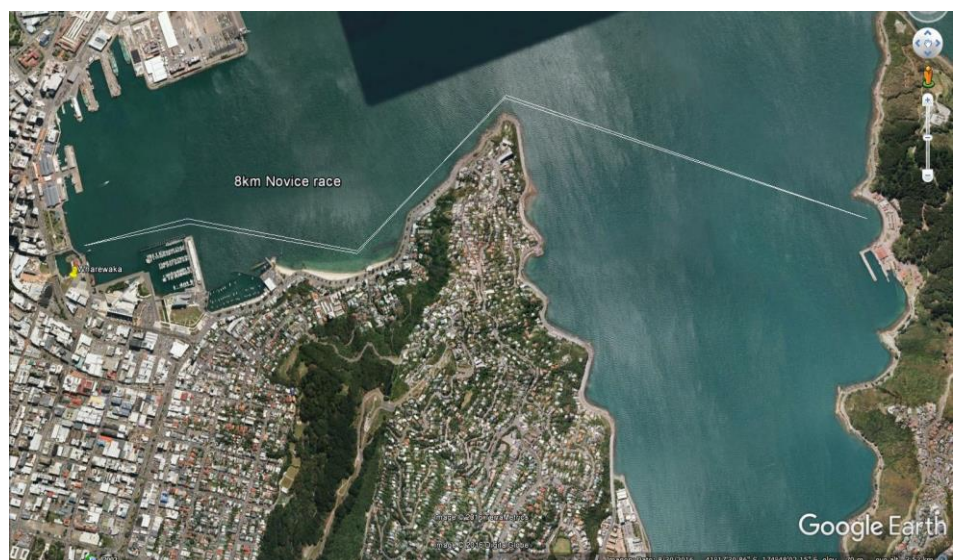
Alternate Venue: If the venue is changed to Petone then it will be located at Hikoikoi Waka Ama Club, 24 Marine Parade, Petone (next to the Executive Offices of Wellington Tenth Trust/Palmerston North Maori Reserve).

COURSE DESCRIPTIONS:

8 km Short Course race is designed for paddlers who have trained but not raced or are unsure they can complete a 15-18 km course safely. This course has been set with novice to semi-novice crews and steerer's in mind.

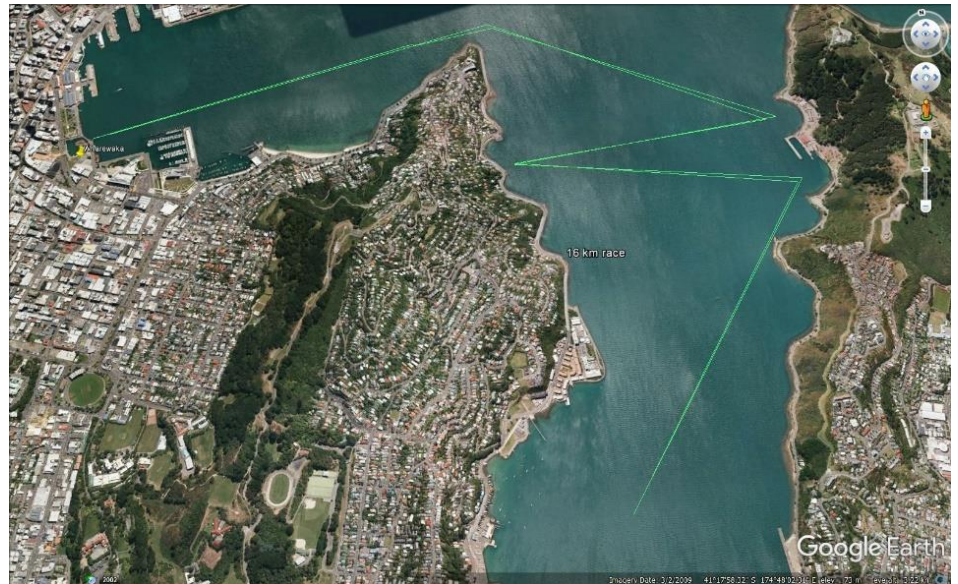
Entries are welcome from W6s Male/Female/Mixed crews. We recommend junior teams (J19/J16) have an experienced steerer or experienced paddler onboard to complete course.

This course will be set out on the Harbour within the boundaries of Shelley Bay, Evan's Bay and Oriental Bay. Racing will keep within 500 metres of the shoreline, except when crossing Evan's Bay.



15-18 km competitive race is a nice blast for those with plenty of racing experience and capable of completing a 15-18-kilometre course in under 90 minutes. There may be challenging pieces within this course. A competent steerer and/or crew is advised. Conditions on the day may allow for a course around Matiu Island. Open to W6 Male/Female/Mixed crews.

The Event Director reserves the right to amend the distance or course for any race in adverse weather conditions.



**REGISTRATIONS
DUE BY:**

Wednesday 20 June 2018 (Midnight)

Online registrations available at www.wakaama.co.nz and must be entered by **your club representative**. Open NOW!

All paddlers competing in this event must be Waka Ama NZ affiliated paddlers.

REGISTRATION FEE:

\$25.00 per senior paddler

\$15.00 per junior paddler

*Fee includes a hot soup and BBQ at end of each race.

Race fees must be deposited into our bank account by 20 June 2018, **payment will be not accepted on the day!**

Account Number: Ngahuru Charitable Trust

Westpac 03-0502-0696175-02

Ref: your team name, followed by 'waka'

LATE FEES:

Late registrations will incur a late fee of \$15 per paddler if received after 20 June 2018.

NOTE: There will be no refunds for crews who choose not to race on the day.

**TRAILER/WAKA
PARKING:**

Parking for canoe trailers only has been arranged in Odlin's Plaza, Taranaki St. Wharf access must be arranged with Chris Fox 027 651 5379 prior to the race. Wharf Access is on Friday 22 June or on race day, early Saturday 23 June. Due to limited access, you will need to be prompt with arranged drop off times.

If you are bringing a Canoe Trailer/Waka into Wellington on Friday or early Saturday morning, please contact Chris.

No public parking is available on the waterfront as we require space for rigging and set up of waka.

Tyres must be brought with trailer and will be required for all waka.

WAKA ALLOCATION

Teams requiring waka please contact hikoikoiwakaama@gmail.com as Hikoikoi Waka Ama may be able to arrange a waka for your race to ensure as many people get to paddle as possible with the resources on hand.

Alternately we check www.hoetonga.co.nz for contact details of local clubs.

Teams hiring waka are responsible for any damage that occurs during racing. These arrangements must be made directly with clubs hiring out waka. Race organisers will not accept responsibility for any damages.

REGISTRATION PROCESS

8.00am Race Registration and Safety Checks.

9.00am (approx.) Karakia & Race One Briefing ALL steerer's to attend. A roll call will be undertaken.

9.30am First race start.

Registration Process for ALL Competitors

1. Report to Registration to collect your Race Pack (safety checklist and race number)
2. Safety Waivers must be submitted (spare available at registration).
3. Your waka need to get cleared by Safety Check Crew (wearing high vis vests) at your waka.
4. Waka that have passed 'Safety Check' will have tag tied on front kiato or marked as directed by Safety Check Crew
5. Make sure your crew stays by waka and is ready for 5min call before to race start.
6. Waka must be rechecked before every race – NEW NUMBER & NEW TAG.
7. This equipment is required for your safety, cheating the safety checks only endangers you and/or your crew.

REQUIRED SAFETY EQUIPMENT

Waka (W6)

- 1 x Cell phone in Waterproof Bag or Flare
- 2 x spare paddles per W6
- 2 x bailers per W6
- 1 x 25-30m Tow Rope attached to taumanu of Waka accessible above spray skirt.
- **Spray skirts are compulsory for W6**
- One lifejacket or personal flotation device (PDF) for every person on board (all J16/J19 paddlers must wear jackets during race).

KAI

PLEASE KEEP your 'meal tickets' located in registration packs to enjoy some delicious hot soup and BBQ after your race. Bring \$\$ for additional kai.

PRIZEGIVING AND RACE VIEWING

There are plenty of options for kai around Te Wharewaka o Pōneke. Check out KARAKA CAFÉ for great coffee☺

Prizegiving will take place at the end of all racing – Makaaro Room at Te Wharewaka o Pōneke. Hoe Tonga race resources will be used at this event and races are able to be viewed in real time on the big screen inside Makaro.

SHOWERS AND TOILETS

Showers and toilets are available at Wellington Rowing Club.

Toilets and changing facilities are located in Te Wharewaka for you to use during the days event.

ACCOMMODATION OPTIONS

Please make enquiries with race organisers should you require accommodation – limited space available for travelling teams at our club base in Petone. Canoe Trailers and Canoes can be stored here Friday night if necessary for travelling teams – once again contact 027 651 5379 to discuss.

MATARIKI HARBOUR CHALLENGE - RACE PROGRAMME (DRAFT)

Time	What	Where/What
7am	Set Up	Te Wharewaka o Pōneke
	Volunteers – Event Director	
7.30am	Unloading/rigging waka	
8am	Team Registration (Opens)	Makaro Room Te Wharewaka o Pōneke
8.30am	Safety Check Commences	
9.00am	Karakia Race Brief Race 1	8km W6 Men/Women/Mixed &
9.15am	Teams Paddle out to start buoy	8km J16/J19 teams
9.30am	Race 1 Begins	
10.30am	Race Brief Race 2	15-18km Women's/Mixed
10.45am	Race 2 Begins	
12 noon	Race Brief Race 3	15-18km Men's
12.15pm	Race 3 Begins	
2.30pm	Prizegiving	Te Wharewaka o Pōneke

Hikoikoi Waka ama thanks you for supporting Matariki 2018